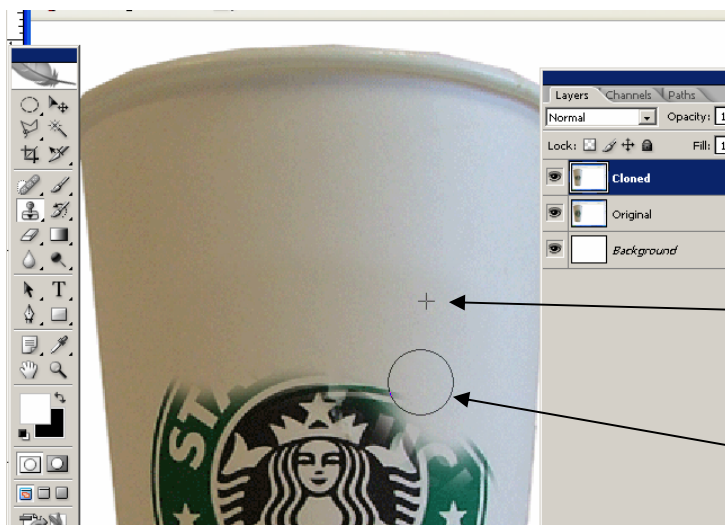


1. Cloning COPIES pixels from one area of your image to another.



In this image we ALT + Left click where we want to copy FROM.

Release the ALT + Left mouse button.

Left click and brush.

+ is where your are copying the pixels FROM. Point of origin.

O is where you are painting the pixels TO. Destination point.

When cloning on a curved surface or a surface with different intensities of lighting be careful:

Watch carefully where you are cloning FROM and see that you are copying only what you want to copy.

Watch where you are cloning TO and make sure your newly painted image has the same tone, lighting and shadows as does the original image.

To duplicate tone, lighting and shadows of this cup, keep your point of origin (+) about 1/2" to 1/4" above or below your destination point (O).

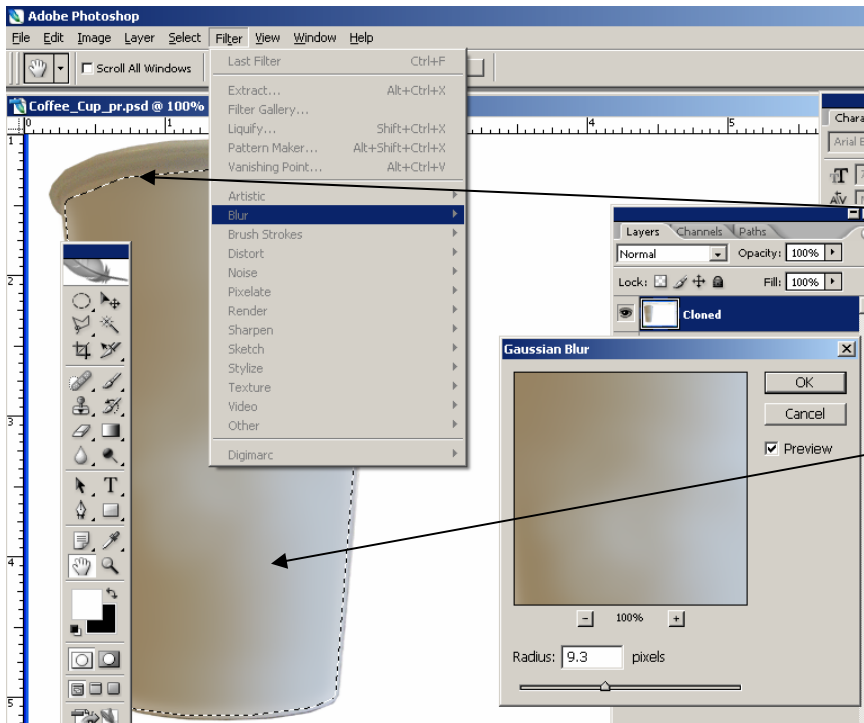
Brush in short strokes and watch carefully not to copy any image you do not want.

Unless your are cloning along a sharp edge, keep your brush edge soft.

If some image "appears" that you do not want, either do a Ctl+z or just Alt+Click and re-clone that area.

2. Tip: If you need to ‘smooth out’ your clone job to make it look more real this

technique might help.

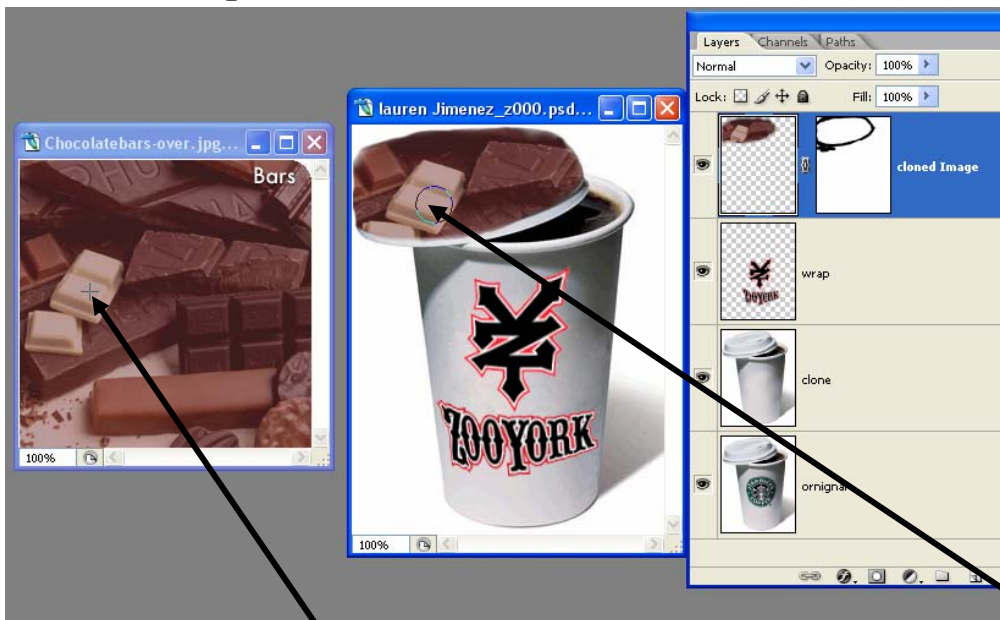


Select the lasso tool > set Feather to 5 and select the image. (I used the polygonal lasso)

Click Filter > Gaussian Blur > adjust Radius until you get the desired blur effect – just enough to create a smooth look while making it look real.

To clone from an EXTERNAL Image on to your

coffee cup do this:



Make a new layer > name it > cloned image.

Open the external image > name it External_Image > save it into your coffee cup folder >

ALT+Left click on External_Image >

Left click once anywhere on your coffee cup image > the clone brush (O) –and-

its point of origin (+)now appears and you can start cloning on to the new layer you named cloned Image.

Name your layers. See examples above.

3. Follow these Instant Mask instructions to mask your newly cloned image.

Instant Masking (sort of)

Pick a Selection tool > Set feather (if desired) >

Draw selection around part of the newly cloned image (on the new layer in your coffee cup > set foreground color to WHITE (not black) > click mask icon (at bottom of layers palette) = *instant mask!*